

SMTP.Gateway 1.2a

custom sms smtp gateway for imrs

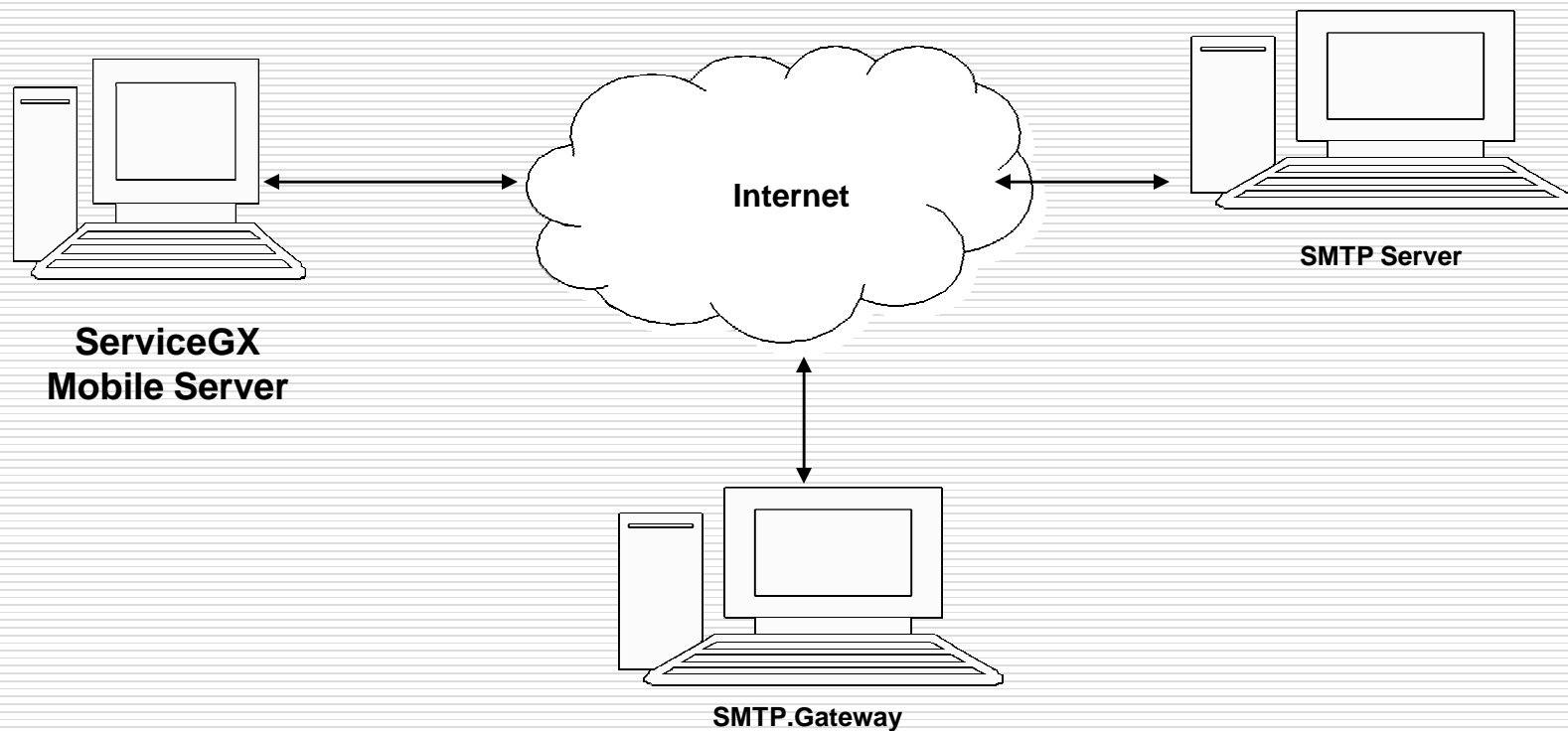
© babu software , All rights reserved.

Introduction

SMTP.Gateway Provide Gateway Support to ServiceGx . It route message to SMTP Mail Server *.

* SMTP Mail Server provide support to send sms to mobile network client.

Network Structure of System



System Requirement

□ Software Requirements

Operating System : SMTP.Gateway can be installed on any of the following systems

Microsoft® Windows® 2000 SP 2 or Microsoft® Windows NT SP 4/XP/2002/2003/Vista.

Microsoft® Framework 3.5, freely available from the Microsoft web site at www.microsoft.com. Microsoft Framework 3.5 is highly recommended.

Microsoft® Internet Explore 6

ServiceGx 2.0 M2

□ Hardware Requirements

500 MHz Pentium II processor

50 MB disk space

256 MB RAM

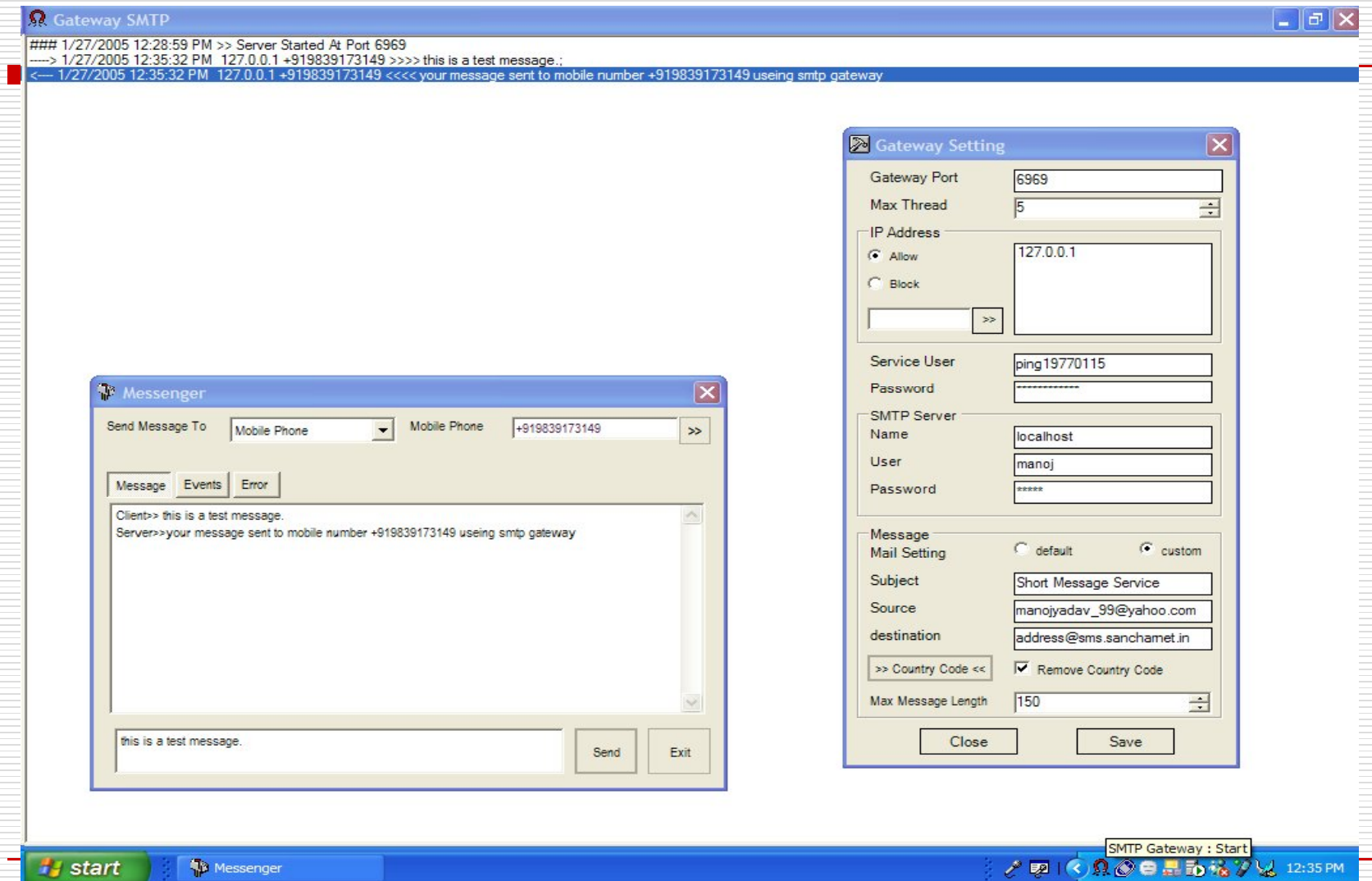
64K colors, 16 bit resolution

Keyboard and mouse

SMTP. Gateway Feature

- ☐ Support Remote and Local SMTP Server
 - ☐ Default/Custom Setting
 - ☐ Address Blocking/Allow (IP Address)
 - ☐ User Name, Password Support (Inbound connection)
 - ☐ Dynamic Configuration
 - ☐ Multiple Message Braking
 - ☐ Connect SMTP Server using password and user name (Outbound Connection)
 - ☐ Acknowledgement (send/error)
-

Simulation



Design and Develop By

Babu Software

Phone +91 9415917612

E-mail support@bstpl.co.in

Web Site www.bstpl.co.in