



User Locator Administration Guide

Version 1.0

IMPORTANT:

Information in this document is subject to change without notice.

ALL SOFTWARE AND ASSOCIATED MATERIAL DISTRIBUTED BY MOTIVATE SYSTEMS IS PROVIDED "AS IS" WITH NO WARRANTY OR GAURANTEE. MOTIVATE SYSTEMS SHALL NOT BE ACCOUNTABLE FOR ANY MISINTERPETATION OR ERROR RELATED HEREIN.

Product names referenced herein may be trademarks of other companies. Motivate Systems is a registered trademark of Motivate Systems LLC.

Table of Contents

I. General Information

II. Setup

a. License Key

b. File Server(s)

III. Additional Settings

a. Path to PsExec

IV. Using User Locator

I. General Information

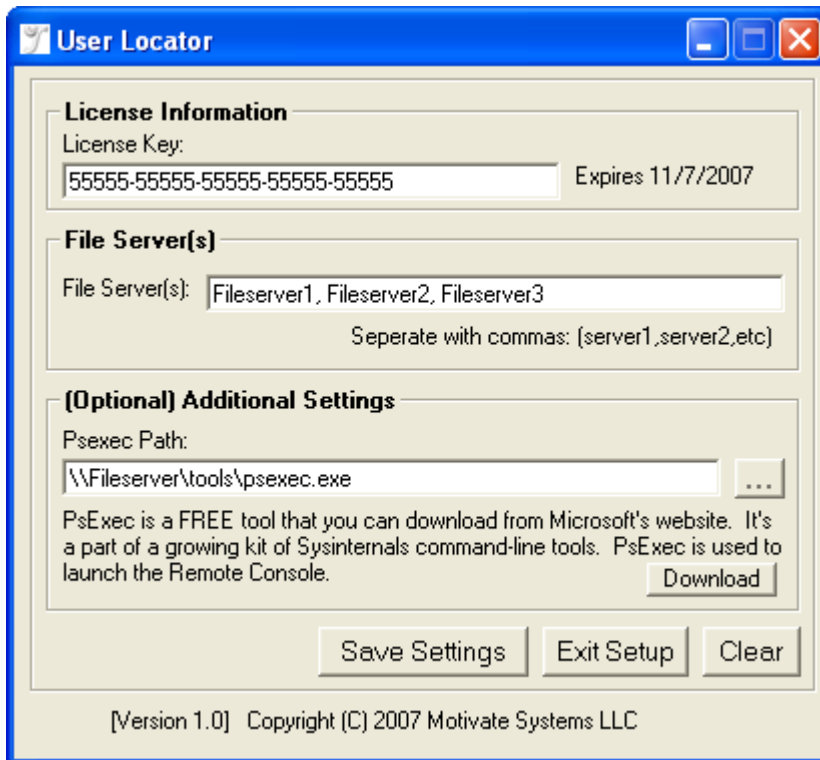
User Locator finds which computers your users are logged into in your Active Directory domain. It binds common administrative tools to one-click access buttons for ultimate time-saving convenience.

II. Setup

Setup requires minimal configuration because User Locator automatically determines domain information. All you have to specify is a License key and a File Server(s).

License Key

User Locator provides a fully functional time limited evaluation with no restrictions. After the evaluation period ends, you can continue to use User Locator by purchasing a license key from www.MotivateSystems.com.



User Locator

License Information
License Key: 55555-55555-55555-55555-55555 Expires 11/7/2007

File Server(s)
File Server(s): Fileserver1, Fileserver2, Fileserver3
Seperate with commas: (server1,server2,etc)

(Optional) Additional Settings
Psexec Path: \\Fileserver\tools\psexec.exe
PsExec is a FREE tool that you can download from Microsoft's website. It's a part of a growing kit of Sysinternals command-line tools. PsExec is used to launch the Remote Console.
Download

Save Settings Exit Setup Clear

[Version 1.0] Copyright (C) 2007 Motivate Systems LLC

File Server(s)

Enter a list of File Servers for User Locator to query. For best results, specify File Servers used for Folder Redirection. Other options include Domain Controllers or central servers.

File Server(s)

File Server(s):

Seperate with commas: (server1,server2,etc)

III. Additional Settings

To activate the Remote Command Prompt button, you'll need to download PsExec.exe from Microsoft's website. It's free. The download button will bring you to the download page. Afterwards, simply specify the location of PsExec.exe.

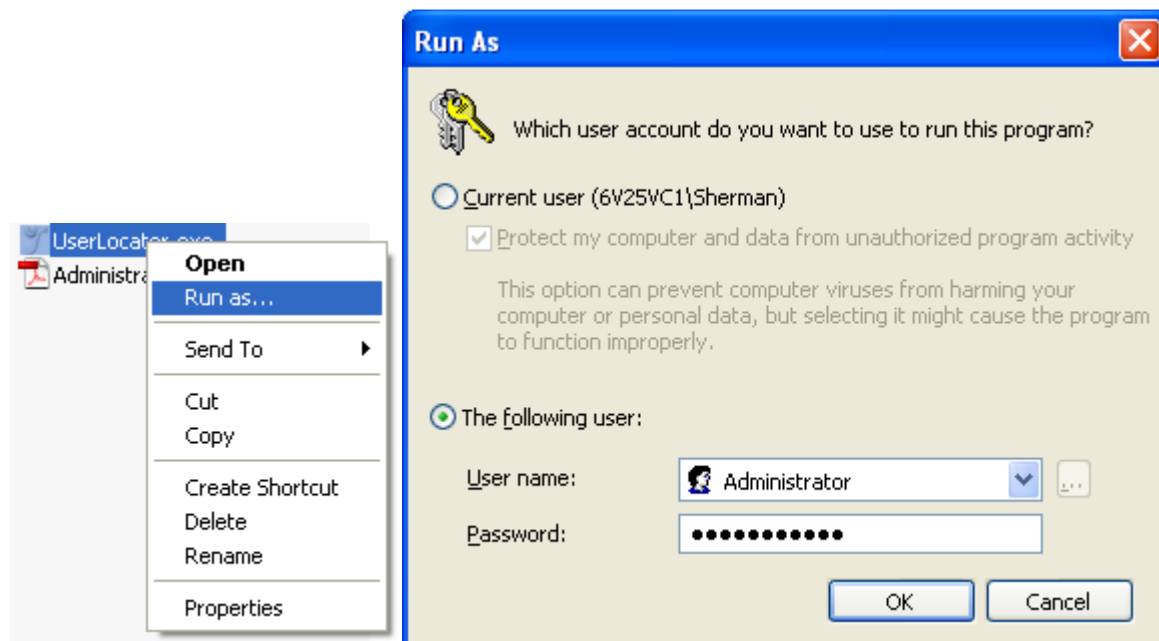
[Optional] Additional Settings

Psexec Path: ...

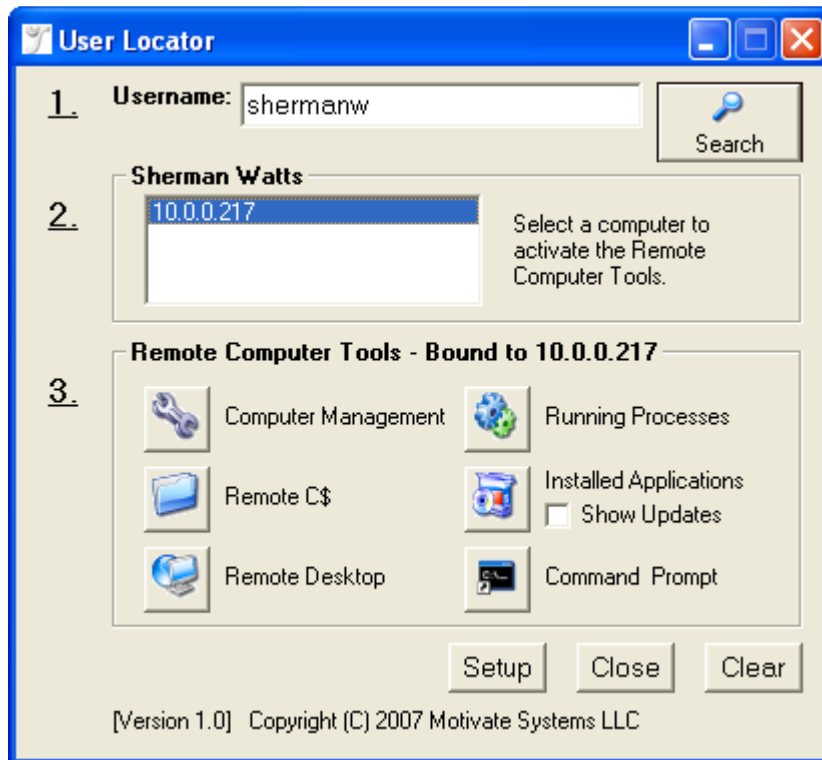
Psexec is a FREE tool that you can download from Microsoft's website. It's a part of a growing kit of Sysinternals command-line tools. PsExec is used to launch the Remote Console.

IV. Using User Locator

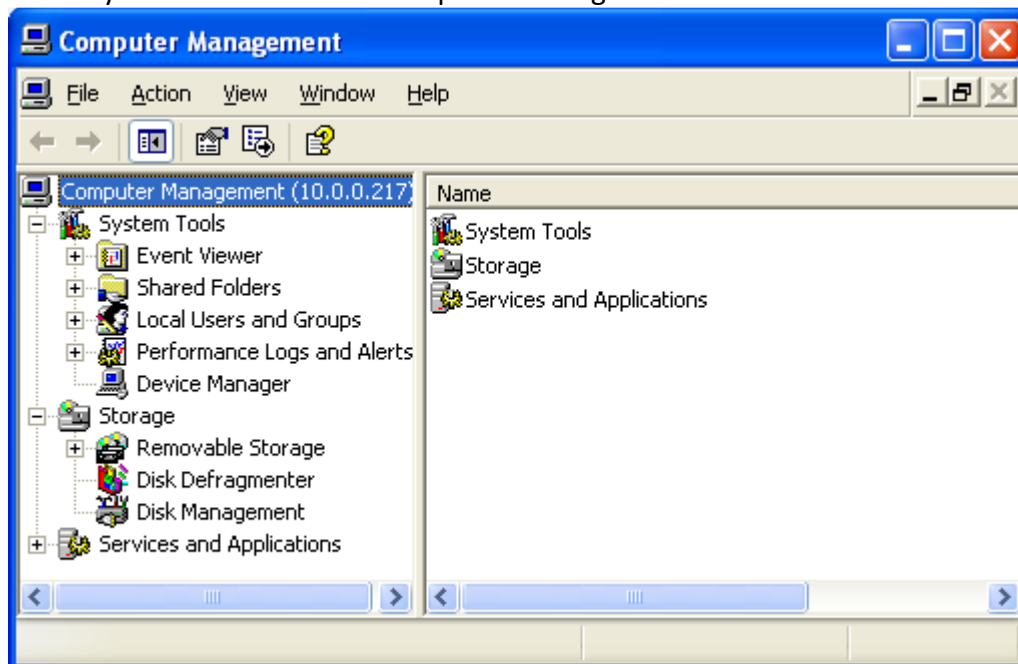
User Locator must be run with Administrative rights. If you are not logged in with Administrative rights, please use the Runas command:



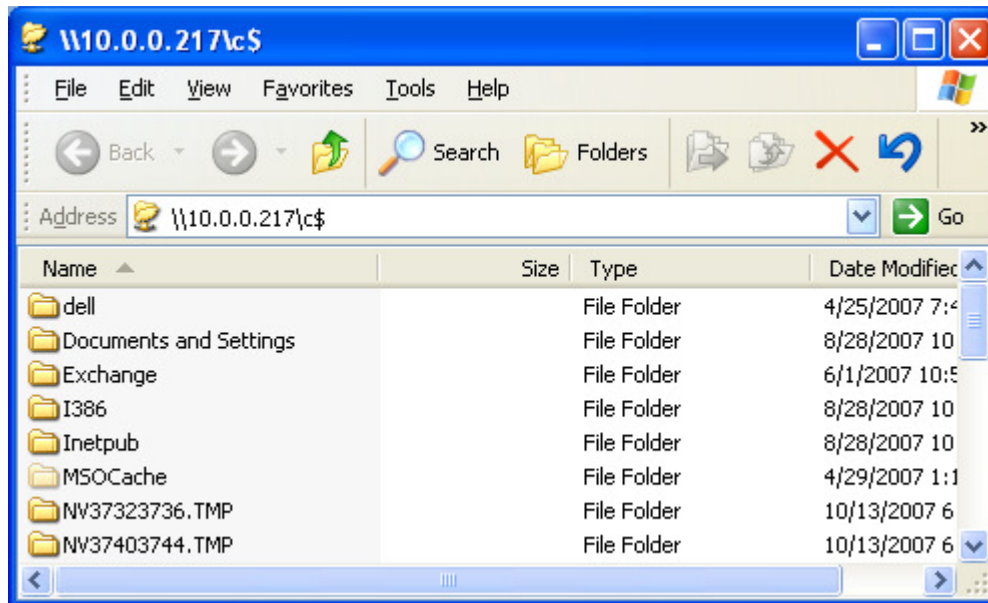
Specify the username of any Active Directory user account. User locator will display a list of computers the user is logged into. Click a computer from the list to activate the Remote Computer Tools .



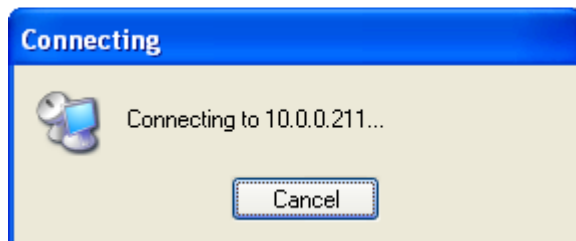
Instantly bind to the remote Computer Management Console!



Connect to the C\$ administrative share without having to click Start, click Run, type the address, click Ok... It's available to you with only one click!



Instantly initiate a Remote Desktop Connection to the remote computer...



Note: On Windows 2000 clients, you must install the Terminal Services client to activate this feature.

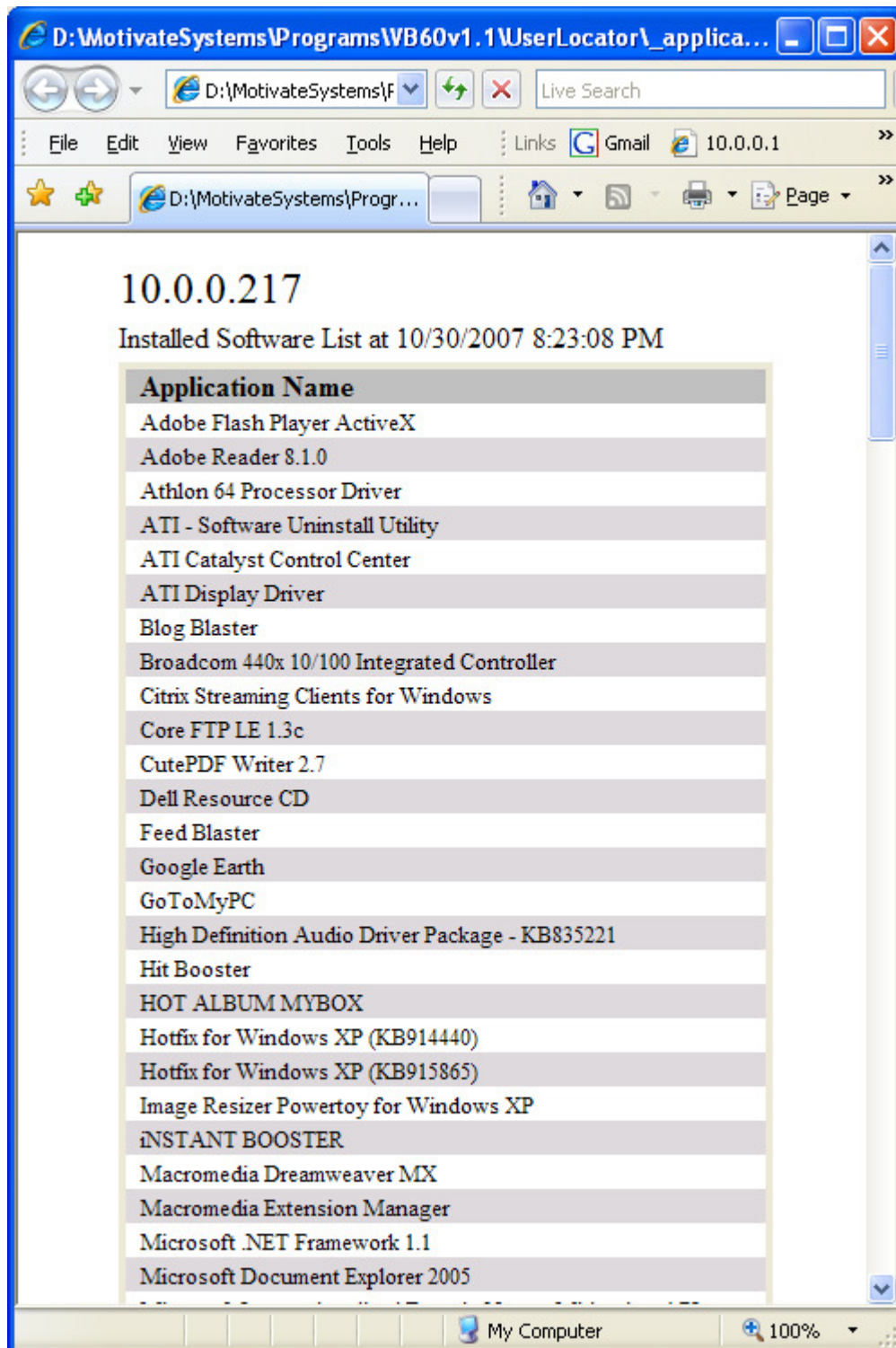
Quickly view all running processes on the Remote Computer – That's Powerful!

10.0.0.217

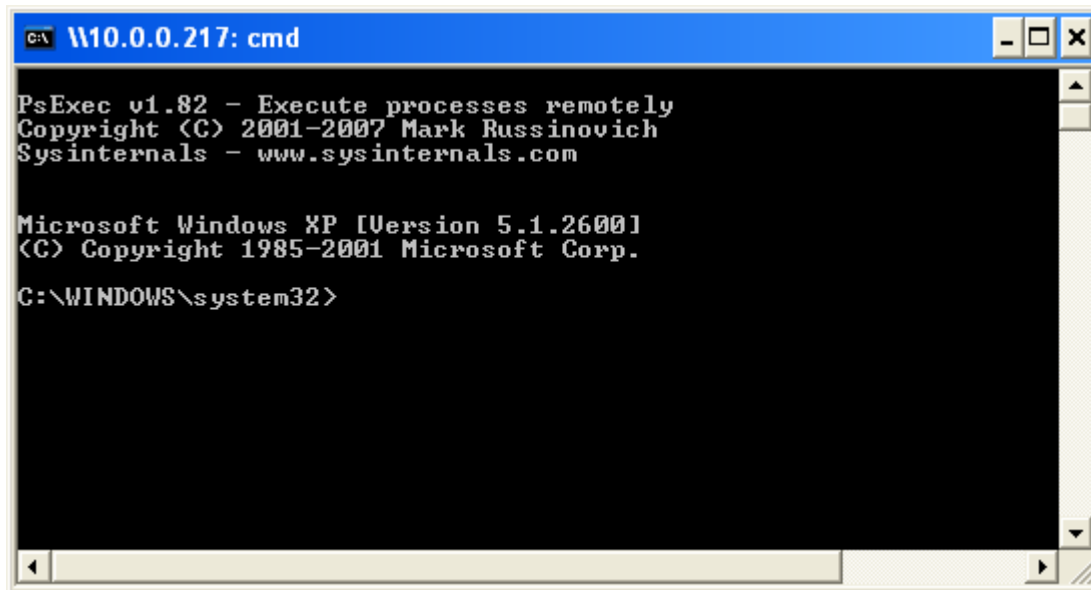
Processes running at 10/30/2007 8:05:10 PM

ID	User	Process	Executable Path	PF Usage (Kb)
0		System Idle Process		0.00
4	SYSTEM	System		0.00
504	SYSTEM	smss.exe	C:\WINDOWS\System32\smss.exe	168.00
552	SYSTEM	csrss.exe		1,772.00
580	SYSTEM	winlogon.exe	C:\WINDOWS\system32\winlogon.exe	7,912.00
624	SYSTEM	services.exe	C:\WINDOWS\system32\services.exe	2,232.00
636	SYSTEM	lsass.exe	C:\WINDOWS\system32\lsass.exe	4,488.00
804	SYSTEM	ati2evxx.exe	C:\WINDOWS\system32\Ati2evxx.exe	676.00
820	SYSTEM	svchost.exe	C:\WINDOWS\system32\svchost.exe	3,272.00
900	NETWORK SERVICE	svchost.exe		2,332.00
988	SYSTEM	svchost.exe	C:\WINDOWS\System32\svchost.exe	13,300.00
1080	NETWORK SERVICE	svchost.exe		1,408.00
1148	LOCAL SERVICE	svchost.exe		2,688.00
1340	SYSTEM	spoolsv.exe	C:\WINDOWS\system32\spoolsv.exe	4,184.00
1476	NETWORK SERVICE	CdfSvc.exe		748.00
1520	SYSTEM	g2svc.exe	C:\Program Files\Citrix\GoToMyPC\g2svc.exe	1,016.00
1552	SYSTEM	inetinfo.exe	C:\WINDOWS\system32\inetinfo.exe	6,064.00
1568	SYSTEM	g2comm.exe	C:\Program Files\Citrix\GoToMyPC\g2comm.exe	2,736.00
1600	NETWORK SERVICE	sqlservr.exe		37,052.00
1736	SYSTEM	g2pre.exe	C:\Program Files\Citrix\GoToMyPC\g2pre.exe	1,024.00
1796	SYSTEM	g2tray.exe	C:\Program Files\Citrix\GoToMyPC\g2tray.exe	1,940.00
1976	Ctx_StreamingSvc	RadeSvc.exe		2,572.00
264	SYSTEM	snmp.exe	C:\WINDOWS\System32\snmp.exe	1,624.00
276	SYSTEM	sqlwriter.exe	C:\Program Files\Microsoft SQL Server\90\Shared\sqlwriter.exe	1,056.00
412	SYSTEM	vmh.exe	C:\Program Files\Microsoft Virtual Server\vmh.exe	976.00
704	NETWORK SERVICE	vssvc.exe		4,760.00
2084	LOCAL SERVICE	alg.exe		1,300.00
2744	Sherman	explorer.exe	C:\WINDOWS\Explorer.EXE	22,144.00
2812	Sherman	stsysstra.exe	C:\WINDOWS\stsysstra.exe	3,972.00
2876	Sherman	ctfmon.exe	C:\WINDOWS\system32\ctfmon.exe	1,088.00
3352	Sherman	wuauclt.exe	C:\WINDOWS\system32\wuauclt.exe	5,816.00
3360	SYSTEM	dllhost.exe	C:\WINDOWS\System32\dllhost.exe	3,428.00
3604	NETWORK SERVICE	msdtc.exe		2,068.00
224	Sherman	VB6.EXE	C:\Program Files\Microsoft Visual Studio\VB98\vb6.exe	10,012.00
2732	SYSTEM	svchost.exe	C:\WINDOWS\System32\svchost.exe	2,580.00
2404	Sherman	WORD EXE	C:\Program Files\Microsoft Office\Office12\WORD EXE	17,284.00

A list of Installed Software is available in seconds!



Even a Remote Command Prompt is at your finger tips!



```
C:\ \10.0.0.217: cmd

PsExec v1.82 - Execute processes remotely
Copyright (C) 2001-2007 Mark Russinovich
Sysinternals - www.sysinternals.com

Microsoft Windows XP [Version 5.1.2600]
(C) Copyright 1985-2001 Microsoft Corp.
C:\WINDOWS\system32>
```

Note: The Remote Command Prompt relies on PsExec.exe which is a free tool available for download from Microsoft's website.